

Windcowl & heat exchanger

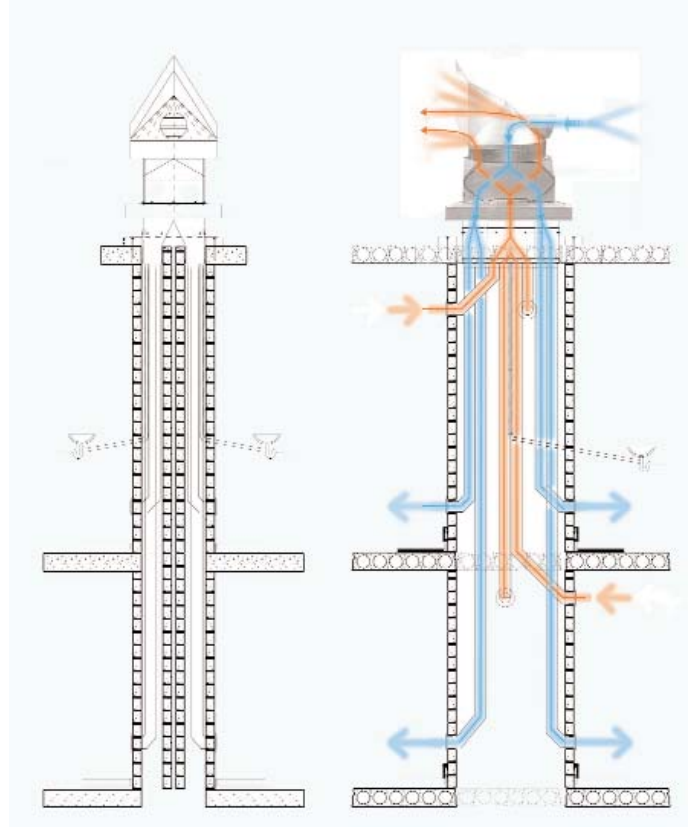
Zero energy heat recovery ventilation

The ZEDfabric Wind Cowl passive heat recovery ventilation system supplies and extracts air to and from a building to maintain good air quality whilst minimising heat loss.

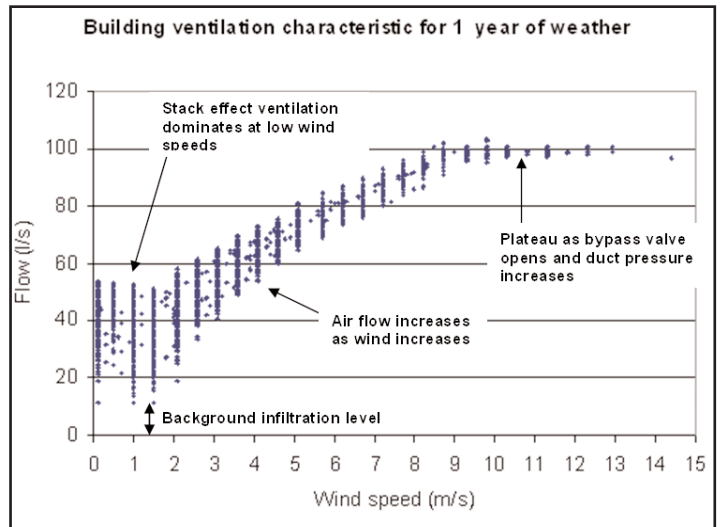
The cowl works like an active ventilation system in that it has dedicated inlet and outlet ducts and a heat recovery system, but instead of using electrical fans to drive the air flow it uses the wind to create both positive pressure at the inlet and negative pressure at the outlet ensuring a throughput of air for no electrical input.

In low wind conditions it will continue to produce reasonable ventilation levels through stack effect.

At an average windspeed of 4m/s in London, depending on the external temperature, the flowrate of the Wind Cowl is between 50-70 litres per second. Each wind cowl unit provides natural ventilation for 350m³ volume of air at 60l/s. The heat recovery system used is 70% efficient.



Technical information



Kit components

We supply the windcowl in two parts, a base unit including PET heat exchangers and a top unit. Colour choices are available on the top unit.